

PROMAX™ 1000 COVERALL



PROMAX 1000

Description

Dromex® Promax 1000, biohazard disposable coverall protects the user's torso, arms, legs and head from the hazards of fine particulate and blood splashes, whilst being electrostatic, waterproof and bacteria resistant.

The Promax 1000 coverall features the following:

- A breathable microporous polyethylene with spunbond polypropylene, composition that has excellent physical properties (strength, elasticity, tear etc)
- Enhanced waterproof performance, providing impervious protection suitable for use against biological hazards such as blood.
- All seams are taped for additional strength and protection especially against dangerous airborne particles and liquid.

Typical areas of use are dependent on the potential risk and exposure of the coverall. The Promax 1000 coverall is suitable for use in industrial and medical environments.

Special Instructions

- Always conduct a visual inspection prior to use.
- This coverall is for single use only - do not launder for re-use.
- Note that prolonged wearing of this suit may cause heat stress.
- The nature of work as well as the work environment needs to be taken into consideration prior to use of this protective clothing.
- In order to protect the whole body, it is advisable to wear protective gloves, boots and face protection together with this product.

Compliance & Conformity

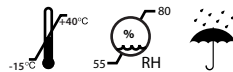
- Performs with the requirements of CE type examinations, PPE Directive, R2016/425.
- Approved to the European harmonized standard, EN 14126:2003 + AC:2003 - Performance requirements and test methods for protective clothing against infective agents.
- Tested to standard GB 19082-2009, clause 5.4. – Resistance to water penetration
- Tested to standard GB 19082-2009, clause 5.4.3 – Resistant to penetration by synthetic blood.
- Tested to standard GB 19082-2009, clause 5.7 – Filtration efficiency.
- Tested to standard GB 19082-2009, clause 5.10 – Electrostatic decay properties.

Specifications

Style: Disposable full body, biohazard, waterproof coverall, with elasticated wrists, legs and waist, hooded with a concealed zipper placket, zip flap and taped seams
Material: Microporous Polyethylene and Spunbond Polypropylene
Zip: Nylon
Weight: 65gsm

Packaging, Storage & Obsolescence

Packed in individual polybags and sold individually
Store in a cool dry place.
The expected shelf life of the coverall is 24 months provided that the suit is kept in its original packaging and stored correctly.



Cleaning & Maintenance

Not required as the suit is disposable, for once off use.

Applications & Limitations

This coverall is for single use only. Do not launder for re-use
Users are advised that prolonged wearing of specialised protective suits may cause heat stress. Discretion is required when determining the work hour donning this protective clothing by taking into consideration the nature of works as well as work environment.
In order to protect the whole body, it is advisable to wear protective gloves, boots and face protection together with this product.

WARNING: Avoid intense heat, direct naked flame, sparks or hot surfaces.
These overalls begin to melt at 120°C.

Putting On & Taking Off Method

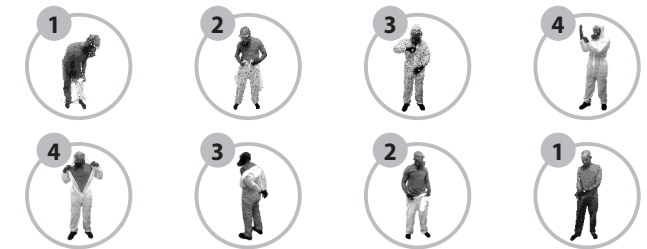
- Pre-Use check:
Before use the user must perform a visual inspection to ensure the clothing is in good condition. Always check for holes, tears, material breaches and incomplete seams before wearing the coverall to ensure maximum protection. Do not use the coverall if the zipper or zipper covers are faulty or if the elastic bands are loose.
Do not use incorrectly sized coveralls and refer to size chart to ensure the correct fit.
- To Put On:
Note: Remove shoes/boots, any jewellery, head gear and any items that could damage the garment before attempting to put on this coverall.

1. Unzip the coverall and slip legs into the trousers whilst seated.
2. Stand and pull the coverall over the whole body.
3. Slip arms into the sleeves and pull the elasticated hood over the head.
4. Carefully remove the adhesive tape cover from the zip cover and seal.
5. Remove the adhesive tape cover from the outer cover and secure the outer cover over the zip-cover with the adhesive strips.
6. Remove the adhesive tape cover from the neck cover and seal over the other covers.

• To Take Off the coverall:

Note: To prevent injury, clean the suit first if it is covered in a contaminant.

1. Remove the hood, open the neck cover, followed by the outer-cover and lastly the zip-cover.
2. Unzip the coverall, remove arms from the sleeves, remove from torso, and lastly remove from legs.



Size Chart (cm)

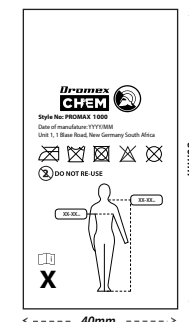
Size	Medium	Large	XLarge
Height * Chest	172 * 130cm	178 * 134cm	186 * 138cm

Disposal

The user is advised to adhere to local legislation pertaining to the disposal of used coveralls and the associated contaminants. PROMAX 1000 overalls are suitable for a single use only and can be incinerated or buried in controlled landfill with no harm to the environment. Restrictions in disposal depend only upon contaminant introduced during use.

Marking

Back neck label



Position:
Neck (Inside)

Chest sticker label



Position:
Chest