



REUSEABLE MIDI SINGLE CARTRIDGE HALF MASK DH101



DH-101

Description

Dromex® DH101, Single cartridge, reusable, lightweight and adjustable, half mask is used in combination with Dromex® gas and/or particulate filter/cartridges, designed to protect the user's respiratory system from breathing in the hazards of dangerous gases and particulates.

The DH101 half mask design entails a high performance exhalation valve, situated in a blue PVC (Polyvinyl chloride) body, that has a soft seal on the face with a dual elastic headband complete and large quick release toggles for ease of putting on and taking off when used with gloves.

The DH101 half mask has a low profile design, that integrates with face shields, eye protective devices and hard hats.

Dromex® DH101 is a standard size half mask body and being adjustable allows for a customized fit for the user. DH101 is designed for use with the Dromex® Unifit single cartridges.

Dromex® respiratory equipment is easy to use, clean and has minimal maintenance.

Special Instructions

All respiratory selection should be read in conjunction with BS EN 529:2005

"Respiratory Protective devices – Recommendations for selection, use, care and maintenance".

These respirators do not supply oxygen.

Do not use these respirators or enter in area where:

- The Oxygen concentration is not known or is less than 19.5% (e.g. tanks or other poorly ventilated areas).
- Contaminants or their concentrations are unknown or are known to be immediately dangerous to life or health.
- Do not use in explosive atmospheres.
- Particulate or gas concentrations exceed levels fixed by the applicable health and safety regulations.
- The requirement for leak tightness is unlikely to be achieved if worn against a beard or facial stubble.
- Not to be used for firefighting.

None of the materials or processes used in the manufacture of these products are known to be harmful to the wearer.

The manufacturer has examined under the system for ensuring quality of production by means of monitoring and inspection.

These respirators are designed to accommodate the basic safety requirements and standards for Personal Protective Equipment.

The information contained herein is intended to assist the wearer in the selection of Personal Protective Equipment.

Actual conditions of use cannot be directly simulated in a test environment therefore it is the responsibility of the user and not the manufacturer or supplier to determine the respirators suitability for the intended use.

All respirators should be thoroughly inspected before use to ensure no damage is present.

Immediately discard, should there be visible damage on the respirator.

Compliance & Conformity

NRCS Homologated to SANS 10338: 1999 as required by the Occupational Health and Safety Act, 1993 (Act No. 85 of 1993), and the Mine Health and Safety Act, 1996 (Act No. 29 of 1996).

NRCS Homologated as per SANS 50140:1998, Respiratory protective devices — Half masks and quarter masks — Requirements, testing, marking. NRCS Type Approval No.: AZ 2011/43.

CE EN approval as per BSI 0086, Type Examination No. 69552 – UNIFIT Half Mask as per approval from IOM (Institute of Occupational medicine) EH8 9SU, WHO collaborating centre for occupational health.

Testing in accordance with BS 7356: 1990 EN140:1998 as per test report AP/530/268(a), contract No.: AP/530/268.

Quality System as per ISO9001:2008 certificate HK01/00703 as issued by SGS, UKAS approval number 005.

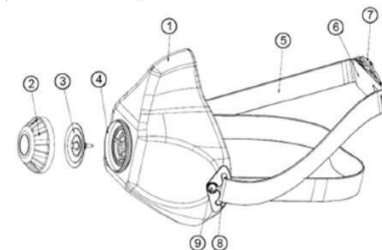
Approved for used with particulate filters as per EN 143:2003 and gas filters as per EN14387:2004 + A1:2008.

Specifications

Style:	Single cartridge, adjustable, PVC body, re-useable half mask with a storage protective mould
Half mask body:	PVC (Polyvinyl Chloride)
Harness:	Withstands a pull of 50 N applied for 10 s
Resistance to temperature:	a) 24 h in a dry atmosphere of (70 + 3) °C b) 24 h at a temperature of (-30 + 3) °C.
Inward leakage:	<5 % of the inhaled air and mean result not exceeds 2%.
Exhalation valve:	Continuous exhalation flow of 300 l/min over a period of 30s. Housing and its attachment withstood an axial tensile force of 50N applied for 10s.
Mass:	95.5 g with no cartridge assembly
Additional:	There are no metal fittings in this device Half mask storage bags are available, Dromex part number: DHRB-BLK



Material:



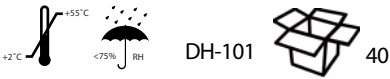
1. Blue PVC Mask Body
2. Grey Polypropylene Valve Cover
3. Grey Silicon Valve Piece
4. Grey Polypropylene Valve Seat
5. Black /Blue(20mm) Elastic Headband (19mm)
6. Black Polypropylene Buckle - M
7. Black Polypropylene Buckle - F
8. Black Polypropylene Swivel Clip
9. Black Polypropylene Locating Pin

Packaging, Storage & Obsolescence

Each Midi mask is packed individually in a retail packet complete with a plastic euro slot hanger sold as 40 units in a box.

The black plastic protective mould/shipping cover must be removed prior to use and placed back on after use to protect the mask mould seal when in storage.

Store in a cool dry place. The masks if stored correctly they should have a shelf life of five years.



Cleaning & Maintenance

Respirators should be cleaned, checked for worn or damaged parts before and after use. If filter cartridge is to be re-used do not remove from respirator, but clean filter with cloth & warm soapy water. Dry with a clean cloth. Water must not enter the filter cartridge. To carry out a more thorough cleaning of the respirator, remove the filter cartridge and exhalation valve and wash the complete respirator body in warm, soapy water and dry. Refit components in reverse order from which they were removed. Care should be taken not to damage inhalation/exhalation rubber valves. Conditioning of the valves should be checked weekly and replaced if damaged/deteriorated. DO NOT USE SOLVENTS, STRONG DETERGENTS, BLEACHES OR PETROLEUM BASED PRODUCTS TO CLEAN ANY PART OF MASK. Maximum temperature should not exceed 30 degrees Celsius.

Sizes Available

Standard (one size fits all).

Marking

Marking on the front of the mask is the type and model number, DroAir DH-101. The marking inside the mask is the manufacturers name or brand, DROMEX.

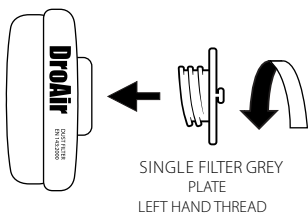


Fitting your Half Mask

Straps should not be twisted or covering any part of the ear. Place the headband over your head with the masks nose piece facing up. The mask must must be put on complete with all cartridges and pre-filters. Ensure the headband is correctly placed on the neck and place the plastic headband fastener in each hand and attached around the head with the headband above the ears and fasten the plastic clip. Adjustments should be made via the two elastic attachment points on the plastic clip. Wearers chin should fit comfortably into the bottom of the respirator. To check efficiency, place a piece of card in front of filters, inhale and respirator should contract sharply.

Changing Filter Cartridge

Remove pre-filter cover and unscrew filter/ cartridge. Remove from mask together with connector and dispose of hygienically and safely. Clean respirator. Re-fit a new Unifit filter complete with valve as per the instructions supplied with the cartridge.



Available cartridges

DROMEX PART NUMBER	CLASS	DESCRIPTION
DHCS-A1	A1	ORGANIC CLASS 1
DHCS-B1	B1	INORGANIC CLASS 1
DHCS-K1	K1	AMMONIA & ORGANIC AMMONIA CLASS 1
DHCS-P2	P2	PARTICULATE FILTER CLASS 2
DHCS-P2PF	P2PF	PARTICULATE PRE-FILTER CLASS 2

Disposal

All industrial waste should be disposed of correctly according to local regulations and good disposal practice. Respiratory protective devices should be disposed of considering the hazardous substance they were used for. Please consider recycling.